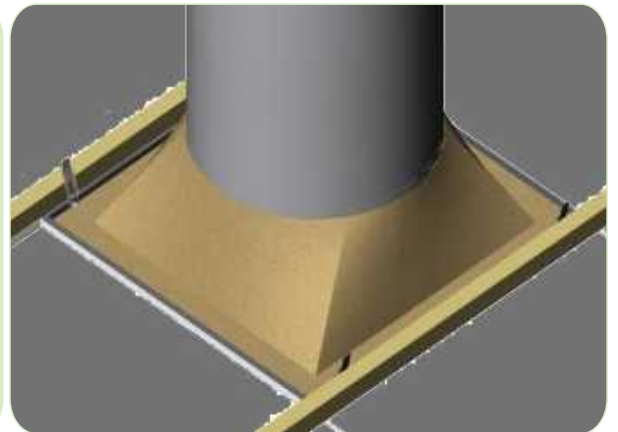
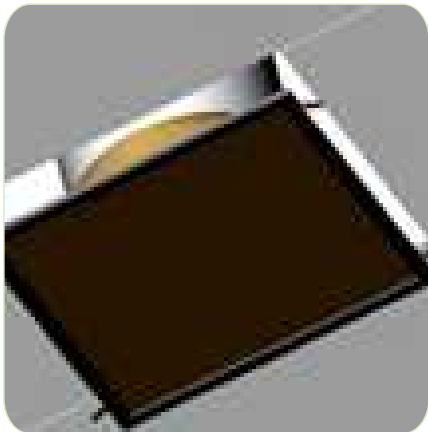


DiffuSox™

DiffuSox™ is made of metal frame and highly permeable fabric, the air dispersion surface attach to the metal frame via Velcro, connecting to metal inlet via square to round fitting and detachable inlet. the design of DiffuSox™ can be customized in view of its application.



Drawbacks Or Challenges Of Traditional Diffuser And Grille

Traditional diffuser and grille have small air dispersion surface area and large air discharge velocity, the occupants in large space feel very strong draft. The traditional diffuser discharge air at relatively high air velocity, the impact towards the metal panels caused by air dispersion will generate noise. given all these challenges, the clients call for a new product to meet higher requirements such as even and comfortable air dispersion, quiet indoor environment, etc.

What is DiffuSox™ ?

DiffuSox™ is made of metal frame and highly permeable fabric, the air dispersion surface attach to the metal frame via Velcro, connecting to metal inlet via square to round fitting and detachable inlet. the design of DiffuSox™ can be customized in view of its application



Connection between DiffuSox™ & inflow duct

ADVANTAGE

1. Even & Comfortable Air Dispersion, Low terminal air velocity without any draft
2. Quiet & Improve indoor environment
3. Easy installation, maintenance and replacement



Flat Surface



Cambered Surface

APPLICATION

- 1) Small space with false ceiling.
- 2) Offices require for uniform air dispersion.
- 3) Meeting rooms and guest houses call for quiet indoor environment.
- 4) Long-term residence with high requirement in air discharge comfort .
- 5) Replacement of traditional diffuser featured by loud noise and high air dispersion velocity.



Offices with false ceiling

SELECTION

The airflow discharged from DiffuSox varies from fabric permeability of the air dispersion surface. Either flat surface or cambered surface is available in view of the client's demand. the fabric permeability can be precisely calculated in accordance with the specific airflow.

1) Permeable airflow from DiffuSox at different air pressure

Permeable airflow at ESP 120 Pa

Pressure (Pa)	Length (mm)	Width (mm)	Permeability (m ³ /m ²)	Airflow (m ³ /h)
120	600	600	288	100
120	600	600	360	124
120	600	600	414	143
120	600	600	500	173
120	600	600	600	207
120	600	600	700	242
120	600	600	800	276
120	600	600	900	311
120	600	600	1000	346
120	600	600	1200	415
120	600	600	1400	484
120	600	600	1600	553
120	600	600	1800	622
120	600	600	2000	693
120	600	300	288	50
120	600	300	360	62
120	600	300	414	72
120	600	300	500	86
120	600	300	600	104
120	600	300	700	121
120	600	300	800	138
120	600	300	900	156
120	600	300	1000	173
120	600	300	1200	207
120	600	300	1400	242
120	600	300	1600	276
120	600	300	1800	311
120	600	300	2000	346

Permeable airflow at ESP 150 Pa

Pressure (Pa)	Length (mm)	Width (mm)	Permeability (m ³ /m ²)	Airflow (m ³ /h)
150	600	600	288	124
150	600	600	360	156
150	600	600	414	179
150	600	600	500	216
150	600	600	600	259
150	600	600	700	302
150	600	600	800	346
150	600	600	900	389
150	600	600	1000	432
150	600	600	1200	518
150	600	600	1400	605
150	600	600	1600	691
150	600	600	1800	778
150	600	600	2000	864
150	600	300	288	62
150	600	300	360	78
150	600	300	414	89
150	600	300	500	108
150	600	300	600	130
150	600	300	700	151
150	600	300	800	173
150	600	300	900	194
150	600	300	1000	216
150	600	300	1200	259
150	600	300	1400	302
150	600	300	1600	346
150	600	300	1800	389
150	600	300	2000	432

2) Permeable Airflow Comparison Table at Different Fabric Permeability

Figure 1 (Size: 600mm*600mm)

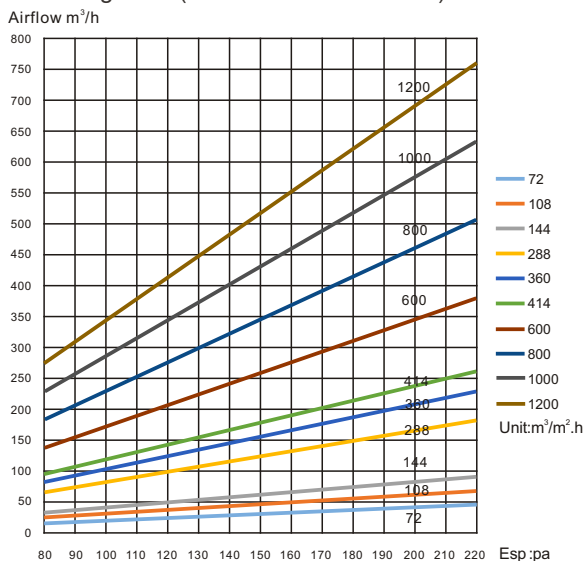
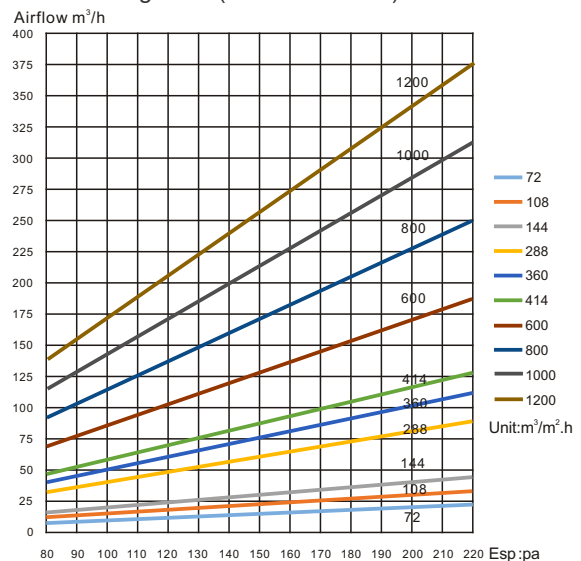


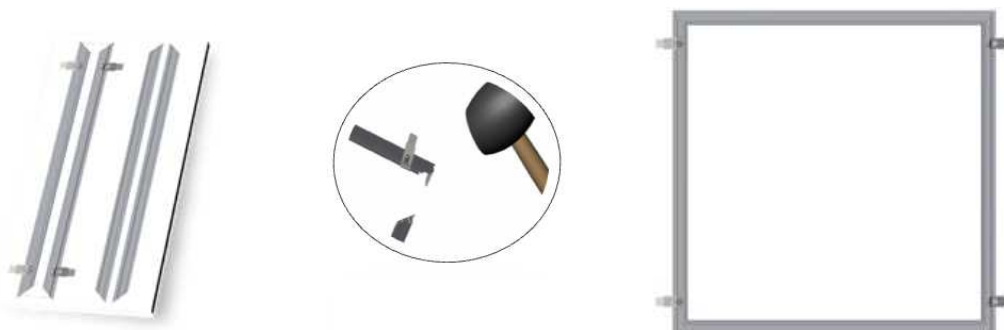
Figure 2 (Size: 600*300)



INSTALLATION

● Metal Frame Assembly

The metal frame consists of 4 pieces of aluminum alloy rims, metal connectors are pre-installed on two of them, use the rawhide hammer to drive the exposed connector on the pre-installed rims into rims without any pre-installed connectors.



● Diffusox Assembly

Attach the fabric air dispersion surface to the assembled metal frame via Velcro, please note the direction of zippers. trim strip shall be installed when the fabric air dispersion surface is flat.

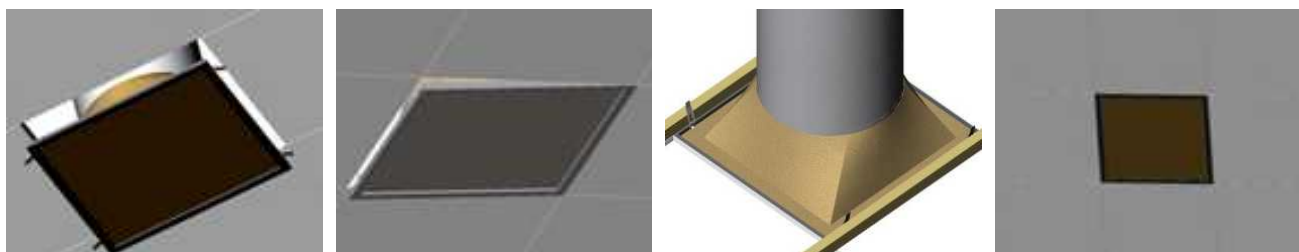


● Zipper Connection between the inflow air duct and DiffuSox

The inflow air duct (detachable inlet collar with zipper) is connected to DiffuSox via the zipper.

● Embedment

DiffuSox is generally fixed onto ceiling via 4 clamps, the clamps is unnecessary to the ceiling with T-bar structure, The self-weight secure diffusox onto the ceiling. Considering that the inner air pressure of DiffuSox is too large, the suspension holes are preformed at four corners of the metal frame.



DurkeeSox[®]

— The expert in the air dispersion industry world wide —



DURKEESOX (WUHAN) AIR DISPERSION SYSTEM CO.,LTD
ASIAN SALES CENTER

8# West Ren Min Rd, Gedian Industry Park,
Ezhou Hubei, China. 436070
Tel: 86-27-59370099
Email: durkee@durkeesox.com



DURKEE AMERICA, INC.

PO BOX 1592
Issaquah WA 98027
Tel: 1(206) 639-2889 Fax: 1(206) 639-2890
Email: info@durkeeintl.com

DISTRIBUTOR DATA